



GLOBAL DAIRY TECH (PVT.) LIMITED

PAKISTAN'S LEADING
COMPLETE DAIRY SOLUTIONS COMPANY

A large, modern dairy barn with a high, vaulted ceiling supported by a grid of concrete beams. The floor is a mix of concrete and straw bedding. Rows of black and white cows are lined up on both sides of a central aisle, eating from troughs. The lighting is soft and even, highlighting the clean and organized environment.

WE LOVE DAIRY

ITS AT THE HEART OF
EVERYTHING WE DO

CEO MESSAGE

Global Dairy Tech (Pvt.) Ltd has established on the mission to facilitate our clients with exceptional quality products and services. Our corporate philosophy is to satisfy our customers diverse needs by giving the best value. Within year's we have earned the trust, confidence and achieved a leading position by providing outstanding sheds construction services and pre cast building materials country wise. Besides that i believed in the professional team at (GDT) and would like to thanks our clients for putting their trust.



Zaman Chaudhary
Chief Executive Officer—



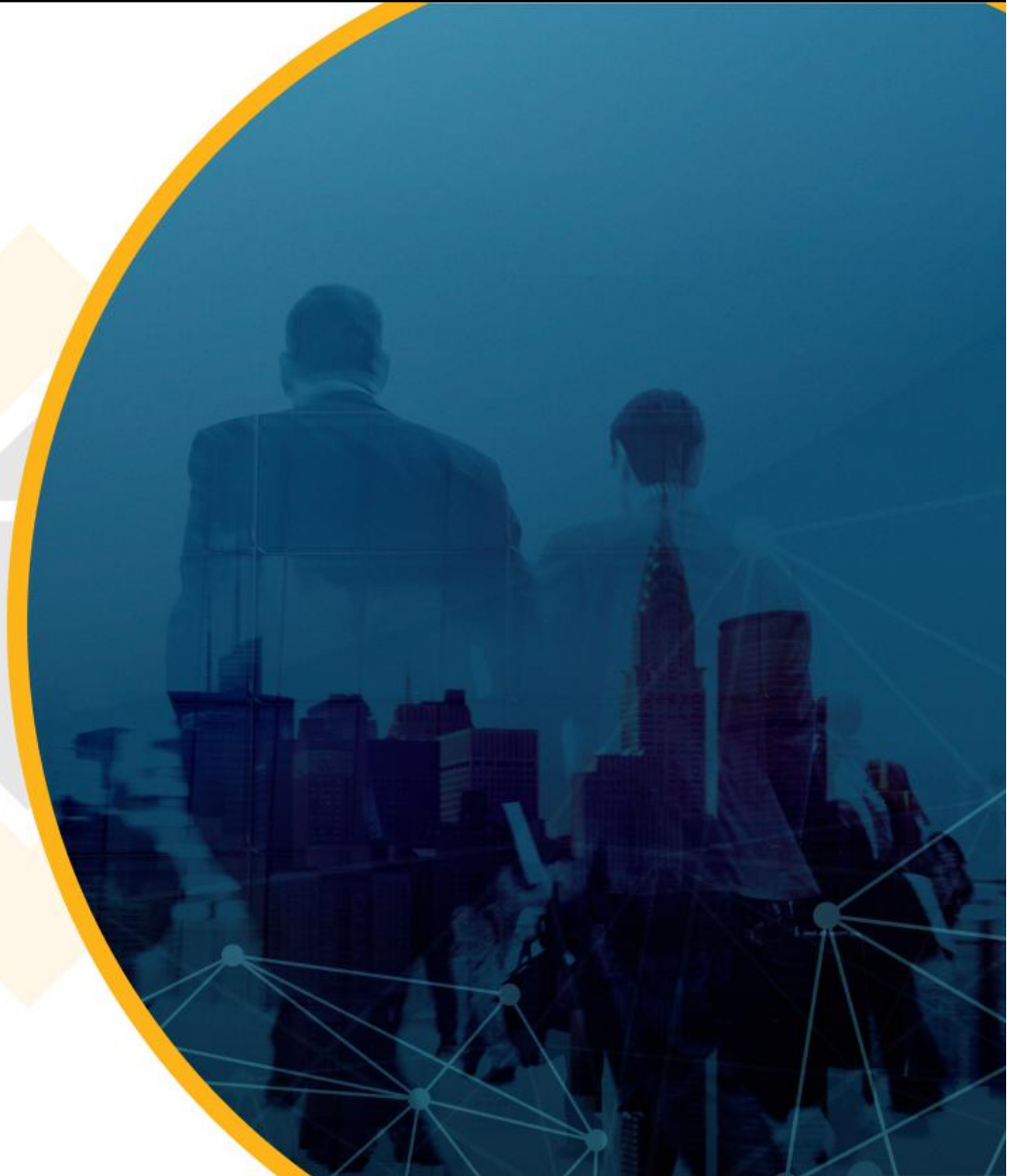
OUR CORE VALUES

- QUICK CONSTRUCTION
- LARGER CLEAR SPANS
- FLEXIBILITY IN FUTURE EXPANSION/ MODIFICATION
- ENVIRONMENT FRIENDLY & ENERGY EFFICIENT BUILDING
- REDUCE MAINTAENANCE COST
- COST EFFECTIVE

OUR COMPANY

Global Dairy Tech (Pvt.) Ltd is one of the leading dairy farm construction company in Pakistan that offer a complete dairy sheds solution. we started our journey in 2007 and set an ultimate goal to become the leading dairy farm construction company of Pakistan. We provide complete dairy solution from now we import cows, milking parlors install them and provide consultancy.

We are a team of highly qualified professionals having experience in pure localized dairy farming giving adaptive global solution. Our highly trained team is committed to provide a safe working environment for all persons permitted to be on site. We are operating all over Pakistan and have 300 plus happy clients. In Pakistan we have the biggest network in dairy industry.



OUR SERVICES

Dairy Shed Construction

We are pioneer in dairy sheds construction in Pakistan since 2007.

Livestock

We import cows from Holland, Australia and United States as per customers need and demand.

Machinery & Equipment's

We are pioneer in dairy sheds construction in Pakistan since 2007.

Consultancy

Our professional consultants strive to give our customers the best possible consultancy in dairy farm.



DAIRY SHED CONSTRUCTION

A dairy shed is a building where cows are kept and milked. Dairy shed can be designed for different purposes, such as milking, feeding and resting.

Purpose

- **Milking:** Cows are milked in stalls or bails.
- **Feeding:** Cows are fed in a feeding area or table;
- **Resting:** Cows are kept in stalls or cubicles where they can lie down and move around.

Design

- **Early sheds:** Simple covered sheds where cows were hand-milked.
- **Concrete floors:** Concrete floor were added to improve hygiene.
- **Water:** Water was piped in for washing cows and cleaning the shed.
- **Step-up platforms:** Raised platforms made it easier for milkers to reach the cows .
- **Pit parlors:** Trenches in the floor allowed milkers to stand level with the cows under.
- **Free stall housing:** Cows are free to move around the resting area except when its time to be milked.



Protection

- Dairy shed can be design to protect cows from wind and solar radiation.
- Wind Breaks can be planted near the shed to reduce wind velocity.

Global Dairy Tech (Pvt.) Ltd is Pakistan's leading dairy shed construction company. To create magnificent results we offer comprehensive integrated solutions for each project. Our specialization is to offer a wide range of cow sheds with low cost and superior design and top finishing. Our professional team is specialized to delivery the shed according to our client's requirement and expectations within the contract period.

We already constructed and delivered almost 300+ dairy sheds of all sizes all over Pakistan.



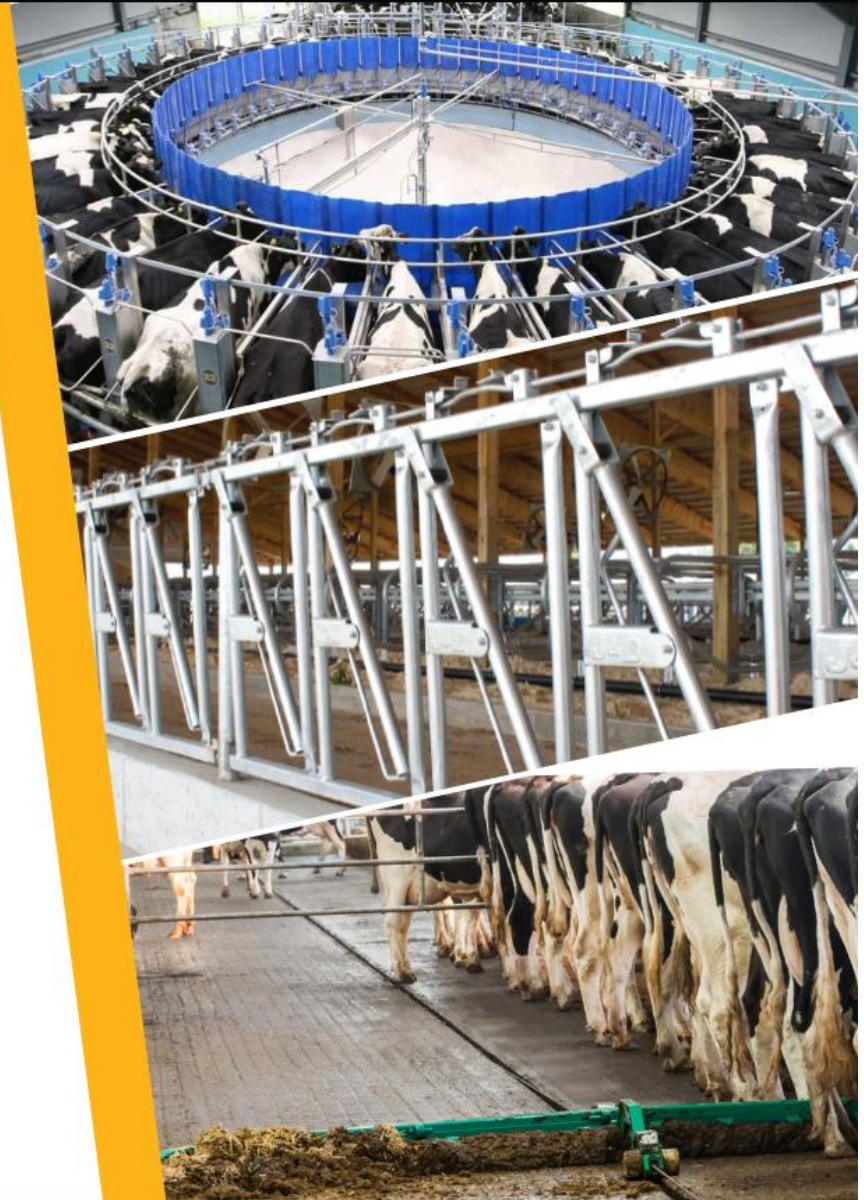
DAIRY MACHINERY & EQUIPMENTS

We import worlds best machinery & equipment's from the world leading brands in dairy industry. We supply a vast variety of models and manufacture according to the customer-specific demand.

We import & manufacture:

- Cattle crush
- Head locks
- Calf Cages
- Milking parlor
- Gates & fence
- Manure scrapers
- Manure management system

Global Dairy Tech (Pvt.) Ltd is working closely with all leading brands in the world and giving also after sale services and doing maintenance.



HEAD LOCKS

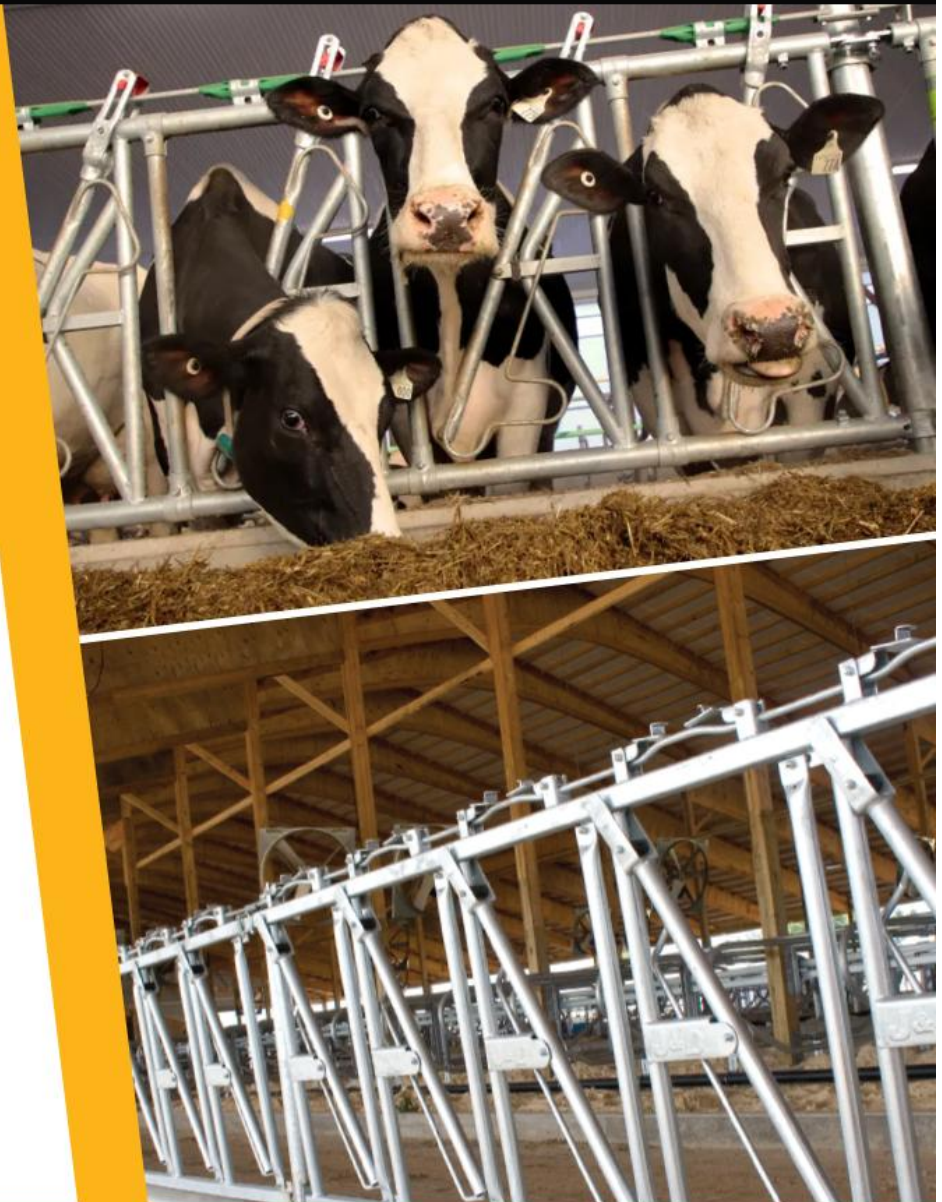
Our cattle head locks are designed for easy & efficient handling, allowing for secure, stress-free access to your heard. Crafted with durability in mind, they are made from hot-dip galvanized steel to ensure long- lasting performance and depend ability in any setting.

What its used for?

- Cattle regular check-up
- Veterinary care
- Keep order at the feed bunk
- Management
- Epidemic prevention
- Breeding
- Milking dairy cows
- Save hay and grain
- Calving

Features

- Heavy duty construction with solid and stable main bracket
- Its labour-saving and effective
- The lock on each York allows each animal to be retained or removed individually
- High tensile tubing
- Hot dipped galvanized finish, instead of paint



GATES & FENCE

Dairy farm gates and fences are used to control the movement of animals and peoples on a dairy farm. Gates can be used to move cows into the dairy for milking, while fences keep animals within the farm.

Gates

Backing gates

Used to move cows into the dairy for milking. well designed backing gates can improve cow flow and make milking more efficient.

Field gates

Used as an entrance to the farm and allow for easy access to fields.

Barrier gates

Used to close crossing quickly and easily, Specially when moving groups of animals.

Fences

- Fences are used to keep animals within the farm.
- Dairy farms may use a variety of fencing option, including steel tubing.



CALF CAGES

Dairy calf cages also known as calf hutches, are individual housing units for young dairy calves. They are used to protect calves from injury and disease, and to ensure they get enough food.

Purpose

- Protect from injury and disease
- Ensure adequate nutrition
- Isolate calves
- Observe sick calves

Design

- Calves are kept in individual hutches for the first 6 to 8 weeks of their lives.
- Hutches are spaced apart to prevent sick calves from contaminating healthy calves.
- Hutches are design to allow care givers to observe calves and provide milk and water.

Benefits

- Housing calves in individual hutches for a short time can improve their help.
- Hutches are flexible solution for housing nursing calves.



CATTLE CRUSH

A cattle crush is a cage or stall that holds cattle or other livestock still so that workers can examine, treat, or mark them.

How it works?

- A cattle crush is a close fitting cage that prevent the animal from moving.
- The crush can be manually operated or hydraulically operated.
- The crush can be fixed in one location or mobile.

What its used for?

- Weighing cattle
- Vaccinating cattle
- tagging cattle
- Cheeking cattle for disease and pregnancy
- Helping with calving
- Suckling new-born calves

Benefits improves livestock and handler safety, decreases stress on cattle during transportation, and improves overall heard health and welfare.



MILKING PARLOR

A dairy milking parlor is a room or building where cows are milked its a key part of a dairy farm, where farmers obtain milk and optimize milk production.

Rotating parlors

Cows moves on a raised rotating platform they can stand in different formations such as tandem, fish bone, or parallel.

Herring bone parlors

Cows stand on elevated platforms at a 45° angle to the operators areas. This allows the operator to access the of the udder.

Parallel parlors

Cows stand on elevated platforms at a 90° angle to the operators area. The operates accesses the udder between the cows rare legs.

Benefits

- Increased milk production
- Improved labour efficiency
- Reduce risk of injury
- Pleasant working environment



MANURE SCRAPERS

Dairy manure scrapers remove manure from the floors of barns where dairy cows are kept. They are essential part of dairy farm management because they help keep the barn clean and hygienic.

How do they work?

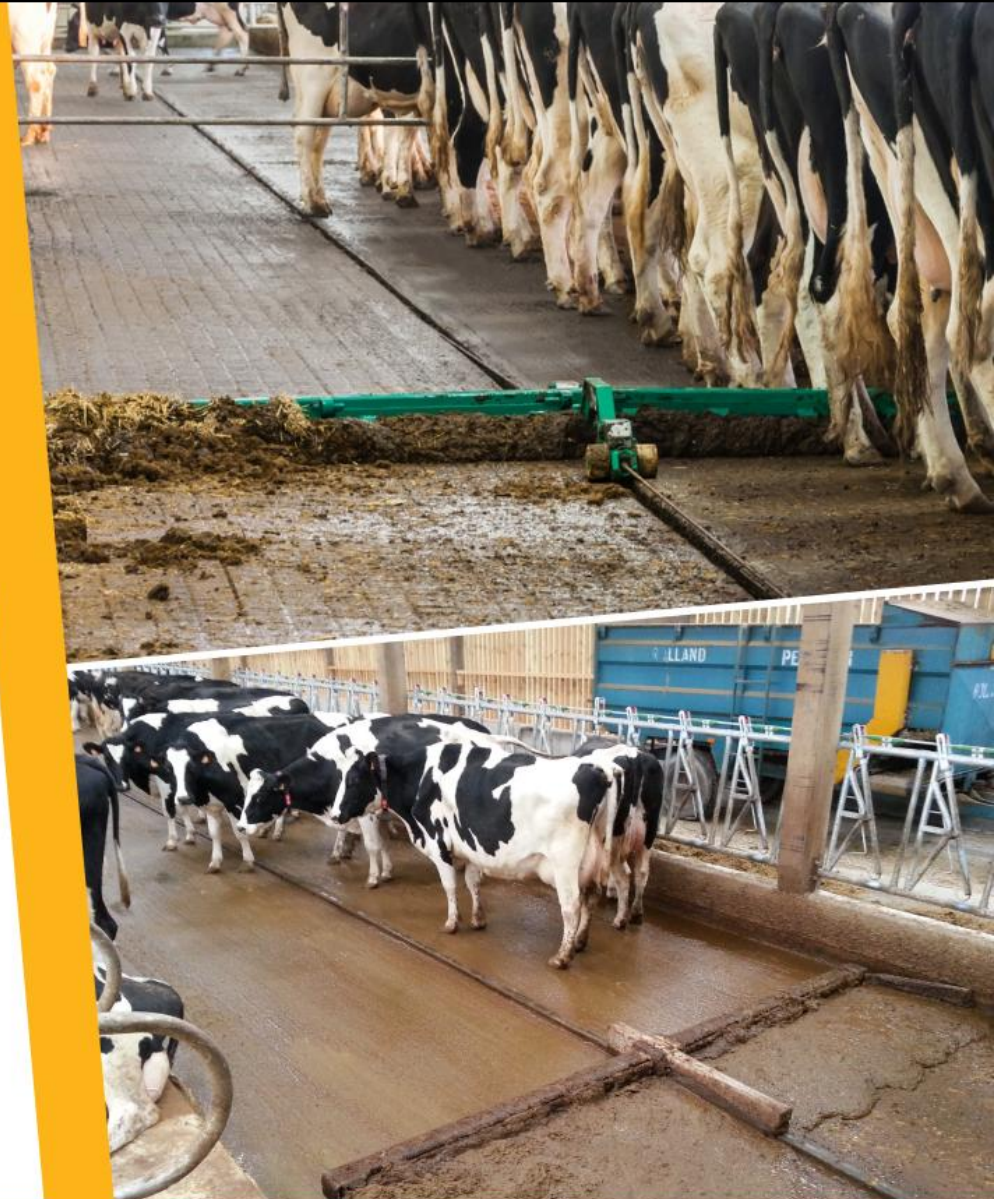
- Manure scrapers can be attached to tracktor, loader or robot.
- The scraper moves along the barn floor pushing or pulling manure to a storage area.

Importance

- Manure scraper reduce labour input and ammonia emissions.
- They help prevent dirt-related illnesses and slipping on the barn floor.
- They help keep the animals comfortable and stress-free which can improve milk yield and growth rate.

Types

- Straight-bladed scrapers
- V-blade scrapers



LIVESTOCK

Over Few years, the importance of crossbred animal has been increased due to start of the development in dairy sector on commercial lines. Crossbred animals are mostly preferred for commercial dairy farms due to their higher production. Global Dairy Tech (Pvt.) Ltd import the world's highest producing dairy cows with a long production life. These animals are imported from Holland, Australia and USA. The breeds of these imported animals are Holstein and Friesian. These cows are suited for the Pakistan's hot climate and provide the highest milk production. At Global dairy tech (Pvt.) Ltd we provide complete services importing cows according to their requirement.



CONSULTANCY

Global Dairy Tech (Pvt.) Ltd proud to be the first shed construction company in Pakistan who offer consultancy services to dairy farmers. Our consultants are market best professionals with a lot of experience in dairy industry. Our consultants provide a complete information to our clients about animals health issues, feeding, environmental issues and guide them how to increase milk production. Our team have technical and analytical ability to solve our client issues.



**AKBAR
DAIRIES**

CHAKWAL, PUNJAB

**UMEED
DAIRY FARM**

LILLAH, PUNJAB

**UNIVERSAL
DAIRIES**

BHERA, PUNJAB

**GHANI
DAIRIES**

NOORPUR THAL,
PUNJAB

GLOBAL DAIRY TECH (PVT.) LIMITED

Complete Dairy Solutions

PROJECT CYCLE

**ZAM ZAM
DAIRY LAND**

GHORA, SINDH

**SAFINA
DAIRY FARM**

MULTAN, PUNJAB

**GADDOON
DAIRIES**

SAMABLI, KPK

HOW IT WORKS



Plan & Design

After meeting with our clients and listen to their requirements our professional team working on engineers, consultants, architects and a complete department for planning and design of the dairy shed.



Construction

After our planning is made, Global Dairy Tech team starts with the construction of your dairy shed. We have our own factory where we manufacture all needed material for the shed.



Delivering

Global Dairy Tech has a ratio of 99.9% of delivering a complete working dairy shed within the committed time period.

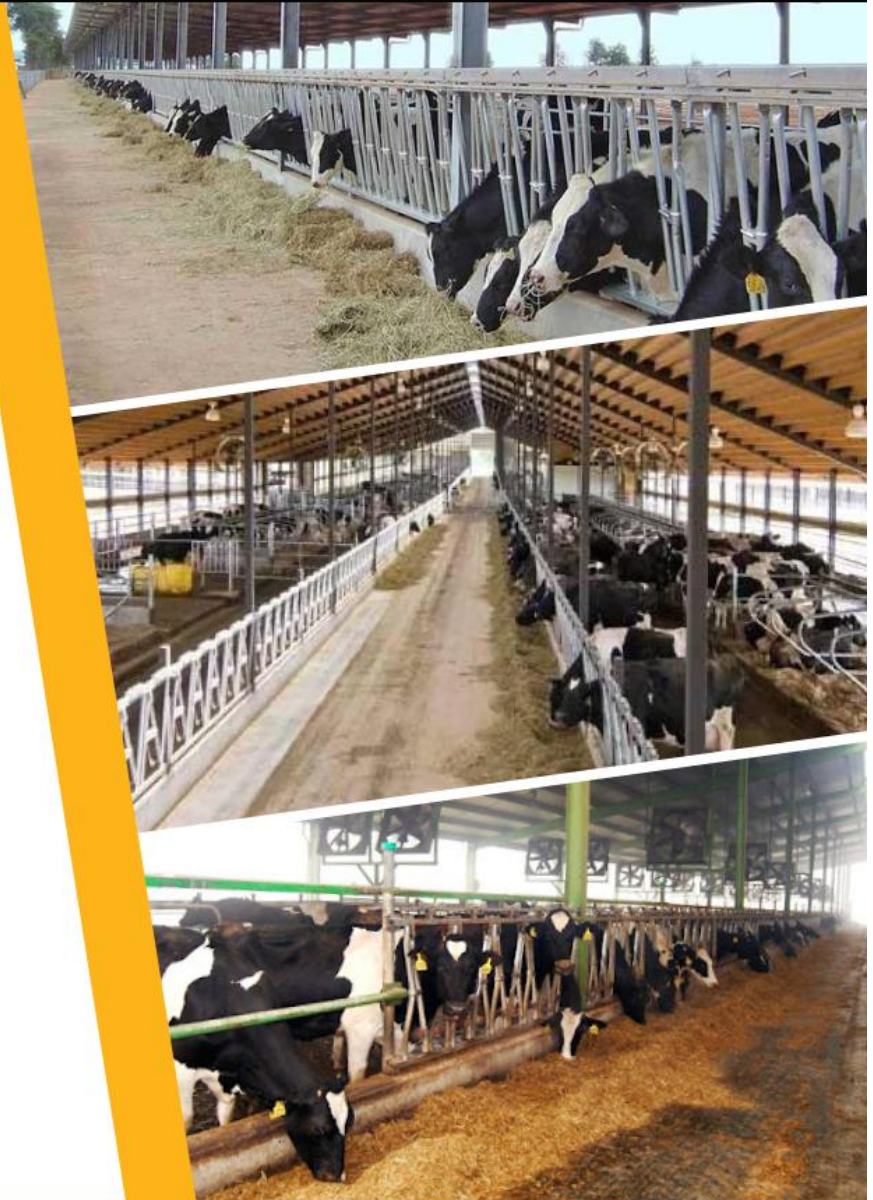


OUR PROJECTS

- Al Safina Dairy Farm, Multan
- Pride Dairy Farm, Chakwal
- KAF Dairy Farm, Rawat
- A&A Dairy Farm, Multan
- MIK Dairy Farm (Phase 1), Depalpur
- Nayab Dairy Farm, Sheikhupura
- Rahim Dairies, Multan
- Khyber Dairies, Swabi
- Brother's Dairy Farm (Phase 1), Nankana
- Dar Dairies (Pvt.) Ltd, Gujranwala
- Tasaddaq Dairy Farm, Muridke
- Mubashir Dairy Farm, Depalpur
- Cattle Den Dairy Farm, Jia Bagga
- Zam Zam Dairy (Phase 2), Bhalwal
- Ghani Dairies (Phase 1), Noorpur Thal
- Ibrahim Dairies (Phase 1), Faisalabad
- FrieslandCampina Engro Dairy Farm, Sukkur
- Al-Bashir Dairy Farm, Bhukkar
- Ibrahim Dairy Farm (Phase 2), Faisalabad
- Ghani Dairies (Phase 2), Noorpur Thal
- LS Farming System, Kasur



- Akbar Dairies (Phase 3), Chakwal
- Toheed Modern Dairies, Pattoki
- Karam Dairy Farm (Phase 1), Swabi
- Umeed Dairy Farm (Phase 2), Lillah
- Al-Abrish Dairy Farm, Chakwal
- Usman Dairies (Phase 2), Kasur
- Afzal Dairy Farm, Bahawalpur
- MK Dairy Farm, Kamalia
- Mona Dairy Farm, Nankana Sahib
- Islamabad Dairy Farm, Islamabad
- Abidi Dairy Farm, Neela Dullah, Chakwal
- Chaudhary Dairy Farm, Mamunkanjan
- Jameel Cattle Farm, Gujranwala
- Sheikh Dairy Farm, Sheikhpura
- Nisar Dairies, Phoolnagar
- 313 Khalil Agri Farms, jamber
- Buksh Cattle Farm, Khanewal
- Malik Shahid Dairy Farm, Kamalia
- Azam Dairy Industries, Chakwal
- Acre Farms Dairy, Mardan



COMPANY GROWTH

Global Dairy Tech (Pvt.) Ltd is one of the fastest growing dairy solutions company in Pakistan.

We have built almost
300+ Dairy Sheds
all over Pakistan
with a minimum capacity of
100 Cows
and maximum
6000 Cows
for our clients

—————→
We are proud to say that we are the pioneer in Dairy Shed constructions in Pakistan and now also offering complete dairy solutions.





GLOBAL DAIRY TECH

» CONTACT US:

UAN: 042-111 222 438

Phone: +92 311 1000 805

Mail: info@globaldairytech.com

Web: www.globaldairytech.com

» SOCIAL MEDIA PAGES

 /GLOBAL DAIRY TECH

 /GLOBAL DAIRY TECH

 /channel/GLOBAL DAIRY TECH

» ADDRESS

Corporate Headquarter :
27CCA, DHA Phase 8 (Ex Park View),
Lahore,
Pakistan

